

# Kindergarten Orientation

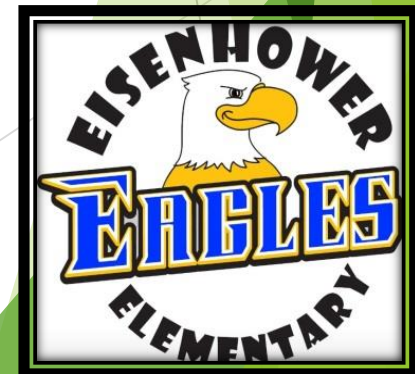
May 14, 2020 from 10:00-11:00 am



- ❖ *Kindergarten students will virtually be able to visit a kindergarten classroom, the link will be on our school website: <https://eisenhower.vansd.org/>*



*Imagine what you can learn!*



# Agenda/Purpose

- Welcome to Eisenhower!
- Introduce specialized programs and staff
- To support you in preparing your child for a successful first year of school
- To share ideas and activities to better prepare your child for Kindergarten

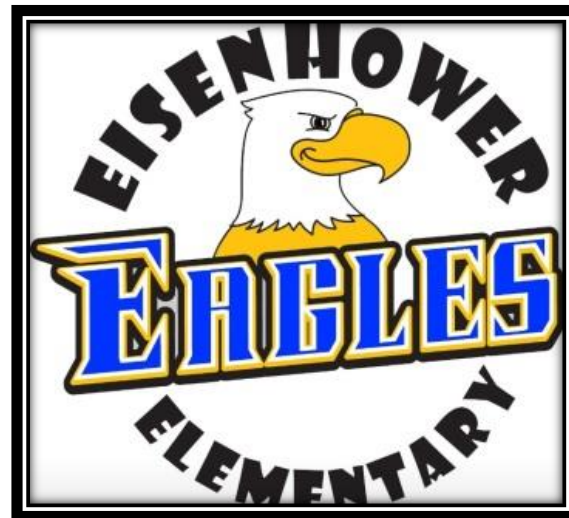


# Introductions to some of our team!

- Jennifer Blechschmidt, Principal
- Mark Jordan, Associate Principal
- Leslie Howard, Reading Specialist
- Teresa Luse, Secretary
- Leah Sweeney, Clerk
- Tracy Thun, Nurse
- Melisa Woods, Teacher Librarian
- Jessica Bodell, Counselor

***It is our mission the  
Eisenhower Community will  
model responsible behaviors  
and achieve success in  
learning!***

**Respect  
Effort  
Safety  
Cooperation  
U-YOU!  
E-Everyone**



# DAY 1 of Kindergarten

## ► Should my child ride the bus?



## ► What procedures do I follow if I bring my child to school?



### EISENHOWER ELEMENTARY STUDENT DROP OFF AND PICK UP GUIDELINES WE NEED YOUR HELP to ensure that this process goes smoothly and that no one is injured. Please cooperate with the following guidelines and with our personnel who monitor this area.

Absolutely no parking or standing allowed in the turn-around area at any time. While this is essential to keep traffic flowing smoothly, it is also the law as this is a fire lane!

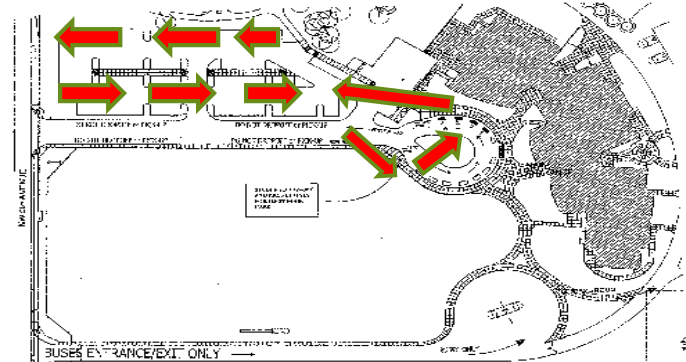
#### DROP OFF

- Park your vehicle in the parking lot if you need to come into the school for any reason.
- To drop off when you are staying in your vehicle, remain in the right lane and curve ahead as appropriate until you reach the established unloading area (the first four lanes on the north side of our circle). Please have your child(ren) exit your vehicle quickly. Staff and/or volunteers will assist.
- Please take care of special instructions, long good byes, etc. before you reach the unloading area, it will help us efficiently.

#### PICK UP

- Park your vehicle in the parking lot if you need to come into the school for any reason.
- To pick up when you are staying in your vehicle, pull forward in the right lane and move ahead as appropriate until you are in the loading zone (the first four cars). The first four cars will be allowed to load children. Students are not allowed to walk to your car as you are waiting in line. Staff and/or volunteers will assist. Please have your child(ren) enter your vehicle quickly and move your vehicle from the turn-around.

Thank you so much for your cooperation and assistance with this situation.





# What does a typical day look like in kindergarten?



# Structure of Kindergarten

- ▶ Literacy
- ▶ Math
- ▶ Writing
- ▶ Learning/Review/Discovery Centers
- ▶ PE & Library (160 mins./weekly)
- ▶ Lunch & Recess

# Top Ten Skills for Kindergarten Readiness:

1. Write your first name. (Start with a capital. Use triangular grip )
2. Sing or recite the alphabet (l,m,n,o,p should be separated)
3. Be able to name all capital and lowercase letters (It is ok if they do not know them all before September)
4. Be able to write all capital and lowercase letters (Start with tracing letters, moving to writing independently)
5. Be able to say all 26 letter sounds (It is ok if they do not know them all by September, our reading program covers each letter)

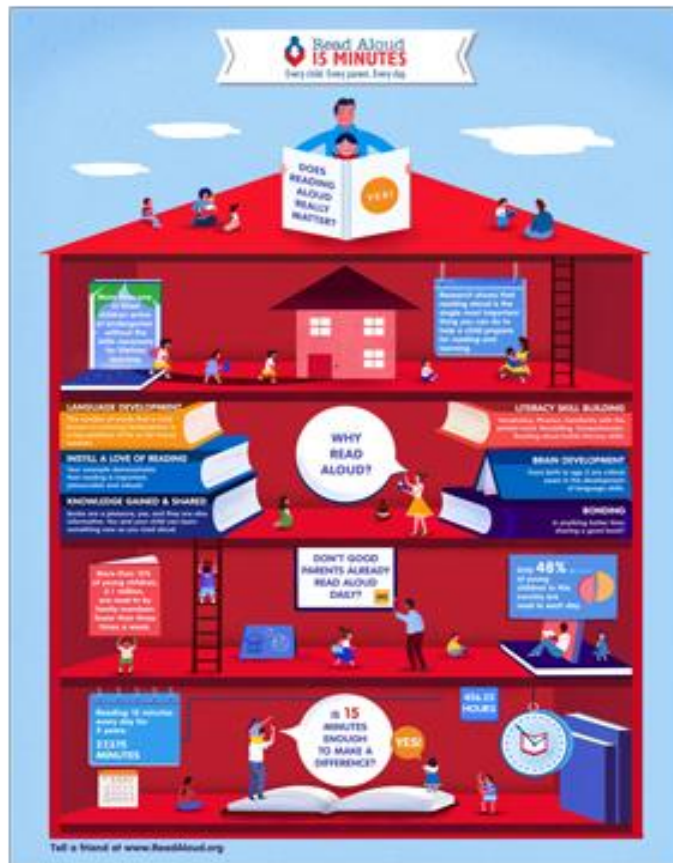


# Skills for Kindergarten Readiness, continued

6. Count from 0-20 (Up to 10 before starting kindergarten)
7. Identify numbers from 0-20 (In random order)
8. Write numbers from 0-20 (Do not worry about reversals or correct form, it's not developmentally possible yet!)
9. Count objects up to 10 (Count a small pile of Cheerios, beads, blocks, etc.)
10. Read sight words (I, see, me, am, & the are the first few words taught in our reading program)

# Readers are leaders!

- One of the most important things you can do is to read to your child for 15 minutes everyday!



## Reading Specialist, Leslie Howard



# Tracy Thun, School Nurse

- ▶ Required immunizations
- ▶ Health history concerns
- ▶ When to keep your child at home
- ▶ Medication at school
- ▶ Health screening
- ▶ Contact phone numbers





# WHEN IS SICK TOO SICK FOR SCHOOL?



## Send me to school if...

I have a runny nose or just a little cough, but no other symptoms.

I haven't taken any fever reducing medicine for 24 hours, and I haven't had a fever during that time.

I haven't thrown up or had any diarrhea for 24 hours.



## Keep me at home if...

I have a temperature higher than 100 degrees even after taking medicine.

I'm throwing up or have diarrhea.

My eyes are pink and crusty.



## Call the doctor if...

I have a temperature higher than 100 degrees for more than two days.

I've been throwing up or have diarrhea for more than two days.

I've had the sniffles for more than a week, and they aren't getting better.

I still have asthma symptoms after using my asthma medicine (and call 911 if I'm having trouble breathing after using an inhaler).



Adapted with permission from Baltimore County Public Schools.

# Attendance

- ▶ If your child is not at school please call the attendance line before 8:30 am if your child will be absent **313-1404**
- ▶ Attendance phone calls go out at 9 am

**ATTEND TODAY**  
ACHIEVE TOMORROW



**ATTENDANCE WORKS**

[www.attendanceworks.org](http://www.attendanceworks.org)





# ATTENDANCE MATTERS

VIDEO

# Melisa Woods, Teacher Librarian



- ▶ Library program
- ▶ Computers/Technology



# Jessica Bodell, School Counselor

- ▶ School Counseling Services
- ▶ Friendship groups, small groups
- ▶ Referrals to mental health supports
- ▶ Social, emotional and behavior supports
- ▶ Resource assistance



# P.B.I.S.

- ▶ Oversees school wide positive interventions and supports
- ▶ FOCUS Room groups
- ▶ Check in- Check out
- ▶ Mind Up small groups and teaches student self regulation

**What if my child seems anxious about coming to school?**



# What I can do to help my child over the summer...

- ▶ Walk to school and play in the school yard.
- ▶ Find the outside entrance to the Kindergarten areas.
- ▶ Establish bedtime routines and morning routines.
- ▶ Make up a fun goodbye routine and practice it in other situations before school starts.





# Read & discuss books talking about starting school



/ The Kissing Hand

By: Audrey Penn

/ Tom Goes to Kindergarten

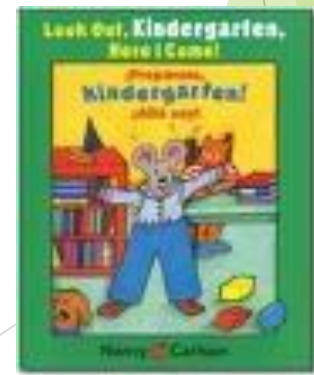
By: Margaret Wild

/ Look Out Kindergarten

By: Nancy Carlson

/ I'll Always Come Back

By: Steve Metzger



# What hours is kindergarten in session?

**8:30 a.m. to 2:50 p.m. (school day)**

## DAILY KINDERGARTEN SCHEDULE:

- ▶ Buses arrive at 8:00 a.m.
- ▶ Breakfast 8:00 to 8:20 a.m.
- ▶ First bell rings at 8:20a.m.
- ▶ Tardy bell rings at 8:30 a.m.
- ▶ 10:00 a.m.-10:15 a.m. Morning recess
- ▶ 11:00 a.m. -11:35 Lunch/recess
- ▶ 2:50 p.m. Dismissal

# What supplies should I send with my child?



School supply list is  
on the district  
website



School supplies will  
**NOT** be shared



**Does my child need to bring a backpack?**



# Does my child need to bring a snack?



## **\$15 Snack Fee**

- Snack is provided
- If your child has dietary restrictions, please send your own snack

# Does my child go outside when it is raining?

- Almost always 😊
- Buy your child a rain proof coat with a hood





*The time you and your child spend together  
doing these activities will help your youngster  
say with confidence...*

**"Kindergarten, Here I Come!"**



Here's my little hand to hold when I am not with you  
I'm off to school to learn a bunch  
each day is fun and new  
My hand will grow a bit each day but  
I will always be  
Your loving child who is so glad you let my  
hand go free

Westside City School Kindergarten 2002

# How will I know if school has been canceled due to weather or other circumstances?

- Flash Alert
- Website



# What if my child needs to go home due to illness or injury?

- ▶ Call home
- ▶ Emergency Contacts



# How will I know what's going on at school?

- ▶ There is a monthly school newsletter that is sent out electronically
- ▶ Our school website:  
<http://eisenhower.vansd.org/>
- ▶ Many of our teachers complete a monthly class newsletter
- ▶ Social Media, follow us on Facebook!

# How do I become involved at school? *TBD per OSPI Guidelines*



We're  
Searching for  
Volunteers

# Join Eisenhower PTA!

- ▶ PTA Membership
- ▶ PTA Events
- ▶ Volunteering

**PTA<sup>®</sup>**  
*everychild.onevoice.*



<https://www.facebook.com/ikeeaglespta/>



# **3 Biggest Indicators for Kindergarten and future success!**

- 1.) DAILY REGULAR ON-Time ATTENDANCE AT SCHOOL!**
- 2.) Reading with your child for 15 minutes a DAY**
- 3.) Parent Engagement in your Student's Learning**

**Thank you for coming and WELCOME  
to Eisenhower Elementary School!**

